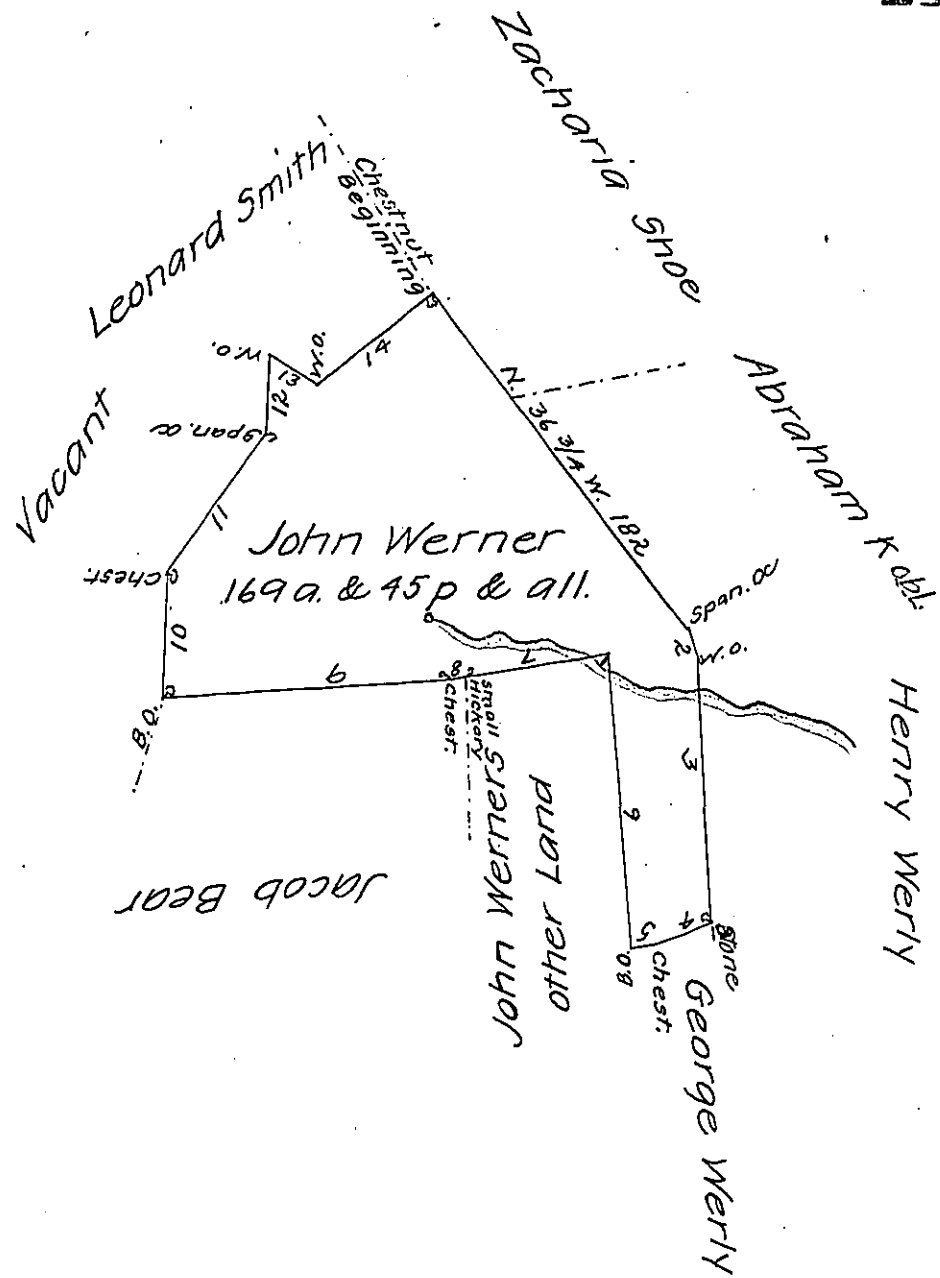


FORM No. 1.

Beginning at a Chestnut marked
being a Corner of Zachariah Shoes

Land & thence as follows

- No. 1 N. $36\frac{3}{4}$ W. 182 ps. Span. OC
- No. 2 N. 13° W. 14.1 ps. W.O.
- No. 3 N. 4° W. 112.5 ps. Stone
- No. 4 N. 73° E. 28 ps. Chest.
- No. 5 N. 82° E. 11.4 p B.O.
- No. 6 S. $3\frac{3}{4}$ E. 126.7 ps. Stump
- No. 7 N. $84\frac{1}{2}$ E. 64.3 p Hickory
- No. 8 N. $83\frac{1}{4}$ E. 8.4 p Chest.
- No. 9 N. $86\frac{1}{2}$ E. 128.8 ps. B.O.
- No. 10 S. $4\frac{1}{2}$ W. 53.2 ps. Chest.
- No. 11 S. $37\frac{1}{2}$ W. 74.7 Span. OC
- No. 12 S. 4° W. 34.7 W.O.
- No. 13 N. $56\frac{1}{2}$ W. 24.5 W.O.
- No. 14 S. $55\frac{1}{2}$ W. 65.5 to Beginning



Situated in Codorus Township York County and Surveyed
the 24th day of June—in pursuance of a Warrant dated Sep.
23^d 1784

By Moses M. Clear D.S.

To John Lukens Surveyor Genl.

IN TESTIMONY that the above is a copy of the original remaining on file in
the Department of Internal Affairs of Pennsylvania, made
conformably to an Act of Assembly approved the 16th day of
February 1833, I have hereunto set my hand and caused
the Seal of said Department to be affixed at Harrisburg,
this thirteenth day of May 1907

Henry Houck

Secretary of Internal Affairs.